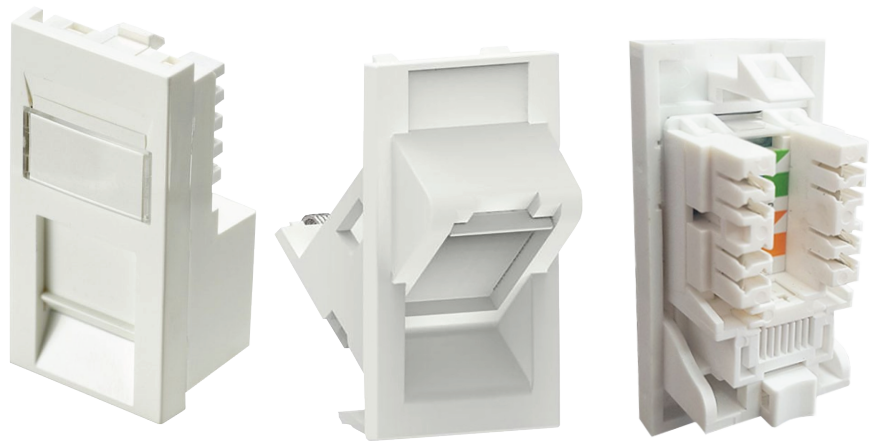




## Shutter Module



# DATA SHEET

☎ +44 20 8895 6455  
✉ [info@webbinfra.com](mailto:info@webbinfra.com)  
🌐 [www.webbinfra.com](http://www.webbinfra.com)

## Shutter module

Webb RJ45 shuttered modules are designed to facilitate connections between all specifications of copper structured cabling solutions. It provides the performance needed for next-generation data communication networks and applications, including gigabit ethernet.

### Features

- In compliance with ANSI/TIA/EIA 568 C.2 standards
- T568A, T568B industrial standard colour coding
- Shutter module material: ABS plastic
- Connectors available in shielded or unshielded types
- Available in angled or straight types
- Compatible with 110/LSA IDC connectors
- Suitable for 23, 24 AWG stranded or solid cables
- Integrated shutter access to protect from dust ingress
- Integrated slot above the shutter for further port identification or labelling
- Available in black or white colours
- Contact plating: gold plated phosphorus bronze
- Insertion force: maximum 20N
- Mating cycles: minimum 750 cycles
- Operating temperature: -10°C to 60°C

*\*Specifications are subject to change without notice based on technical recommendations and related product enhancements*

## SHUTTER MODULE PART NUMBER KEY

Part Number: C.04.SM. \_ \_ . \_ \_ . \_ \_ \_

C.04.SM.Cable.Shield.Type.Angle.Colour

Please add the codes from the tables below in the above format to derive your desired product part number

Cable	Code
CAT6	C6
CAT6A	CA
CAT7	C7

Shield	Code
Unshielded	US
Shielded	SH

Type	Code
6C module	6C
Euro module	ER

Angle	Code
Stright	S
Angle	A

Color	Code
Black	B
White	W

*\*Specifications are subject to change without notice based on technical recommendations and related product enhancements*